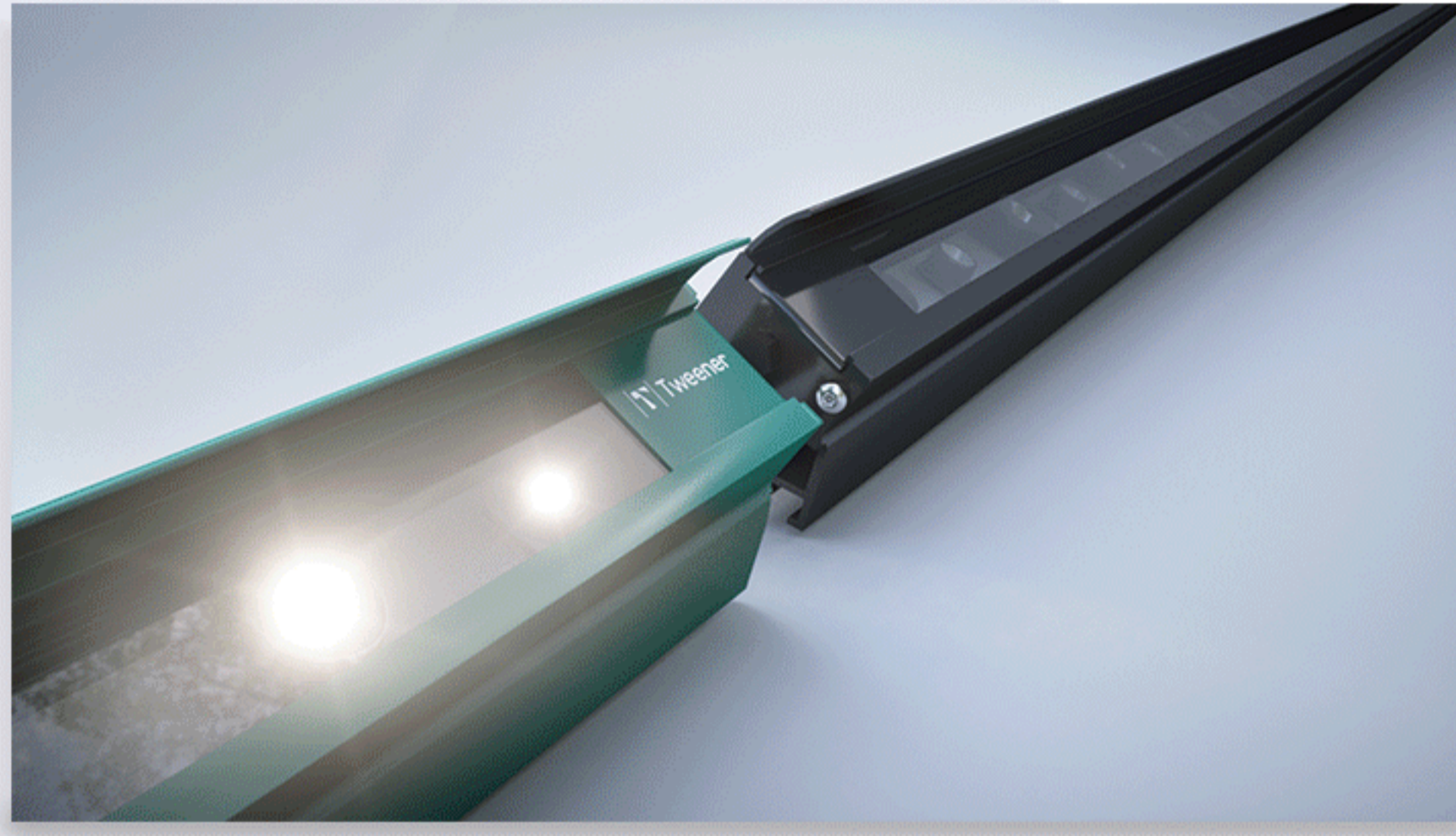




DOUBLE TWEENER

Highlight your performance!

Tweener revolutionizes tennis court lighting thanks to its linear LED bar system, patented by NLX, that mounts directly onto the fence posts on each side of the court.



5-YEAR WARRANTY



MADE IN FRANCE



INSTALLED IN 1 DAY



LIFESPAN OF MORE THAN
50.000 h



360° LIGHTING



UP TO
60% SAVINGS

ECONOMICAL & UNDERSTATED

**Attractive purchase price
and easy installation**

(no building permit, installed in 1 day)

**Low power consumption
and carbon impact**

(only 2200 W to light up a field)

ATTRACTIVE

**Streamlined design that perfectly
blends into the environment**

(sleek lines, no visual nuisance)

Optimized lighting quality

(proprietary optical technology)

RELIABLE

A double certified technology

(CE & UL norms compliant)

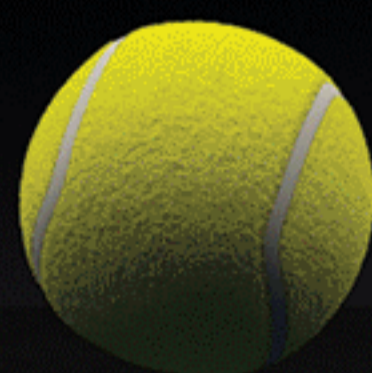
**Extended lifespan with
minimum reliability of**

50.000 hours

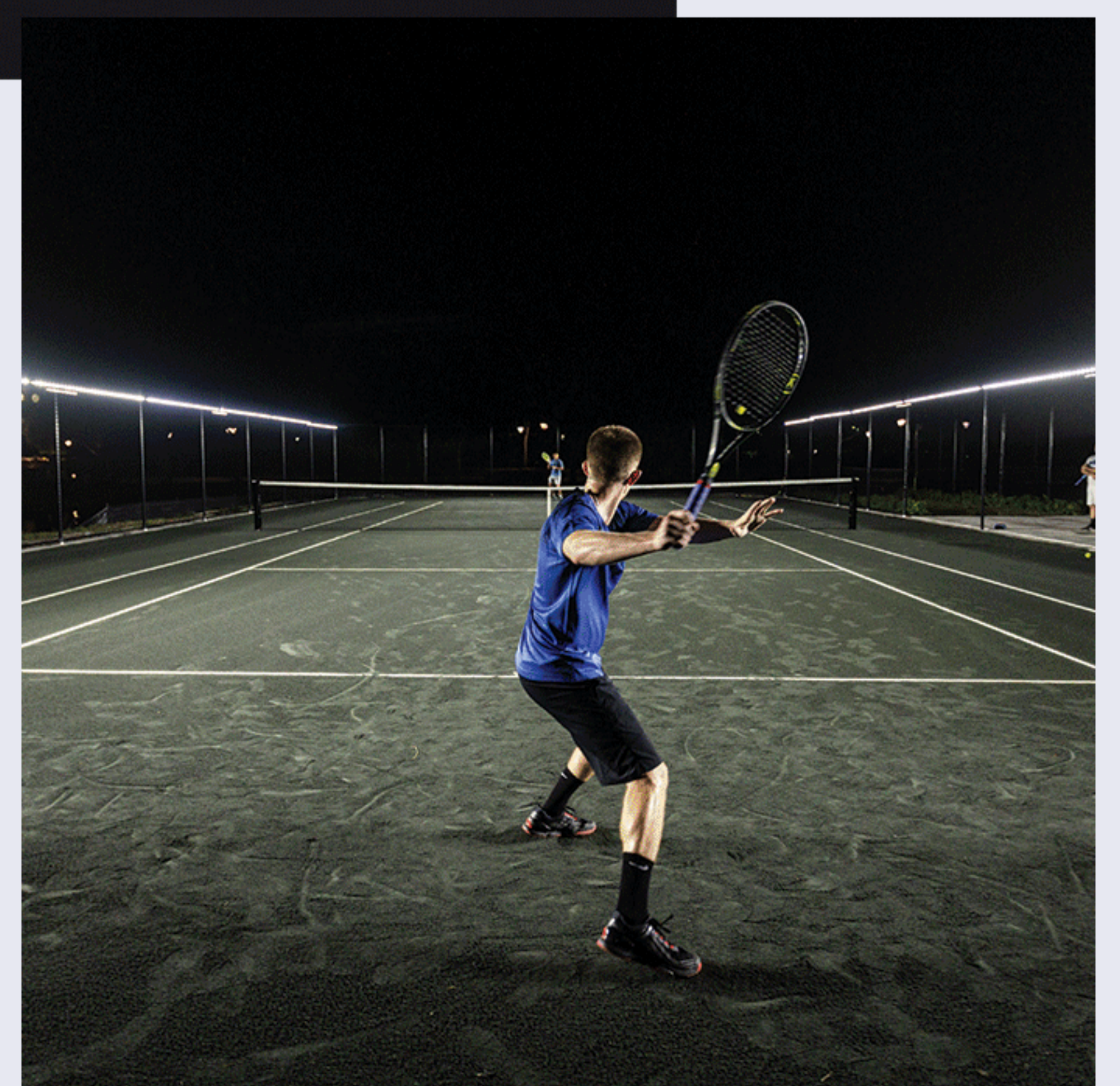
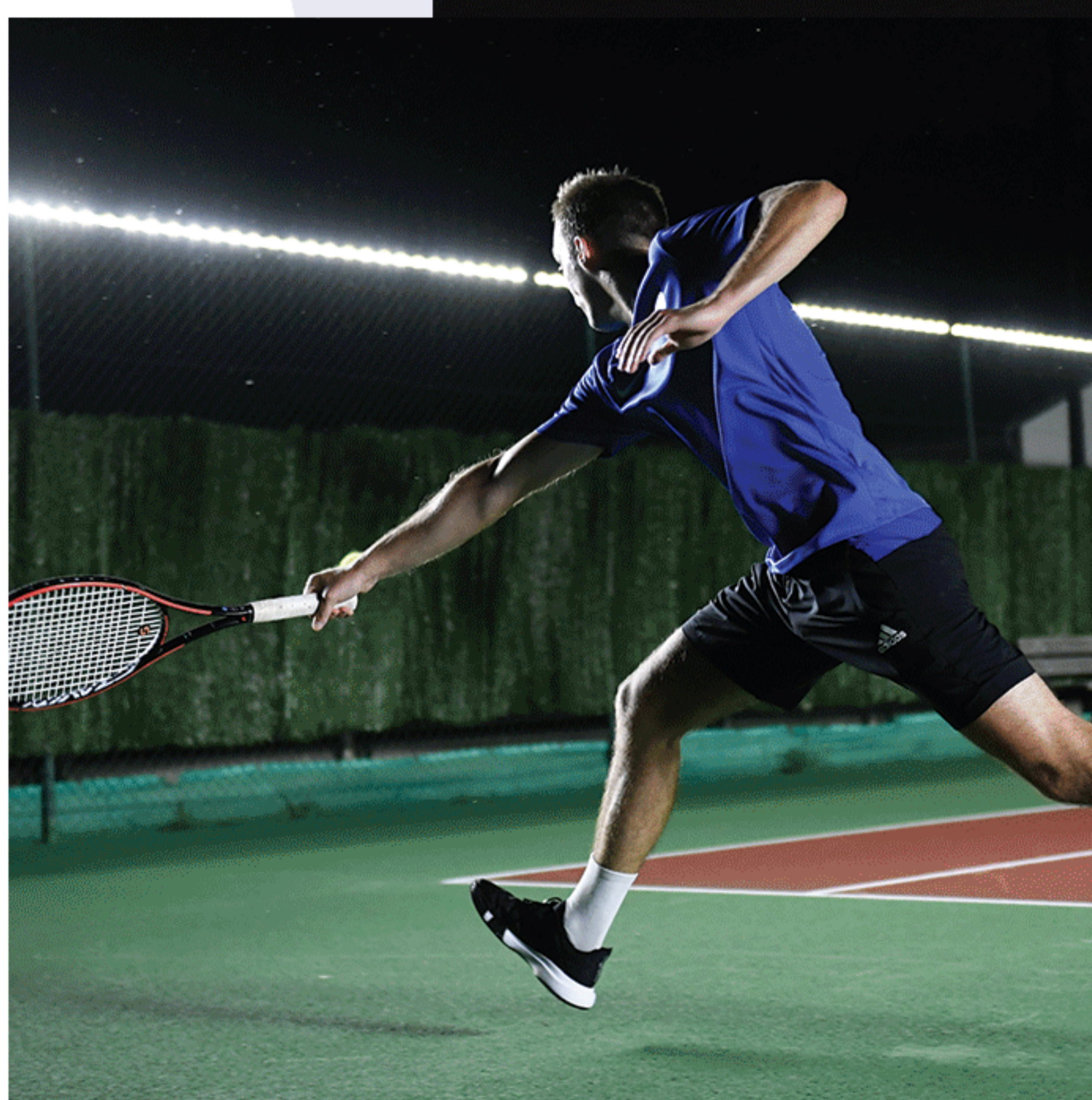
(5-year warranty)



PROJECTOR LIGHTING
ON MASTS



TWEENER LIGHTING





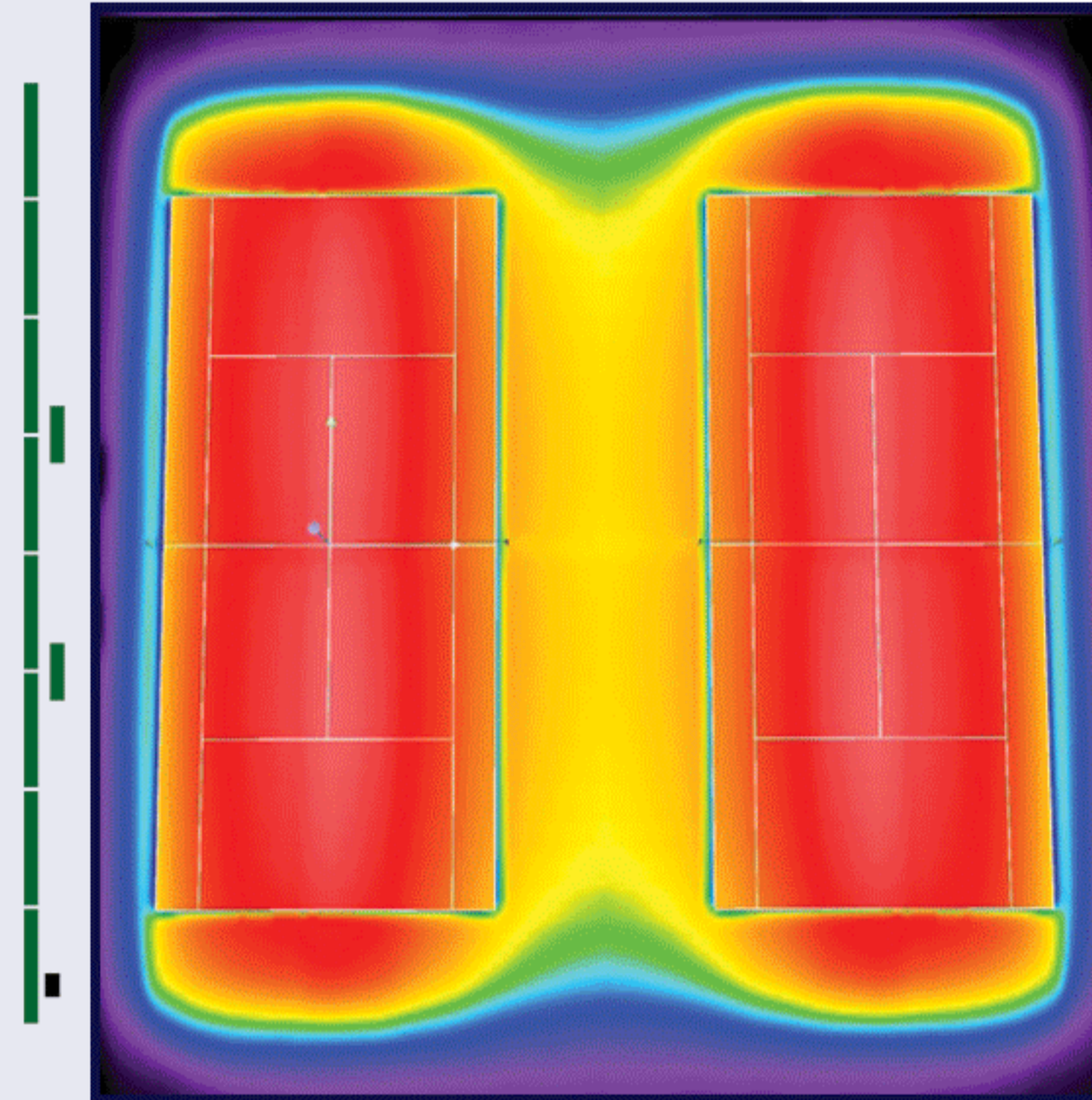
DOUBLE TWEENER

APPLICATION

Double Tweener lights up **2 outdoor tennis courts** for unequalled night-time playing comfort!

COMPOSITION

- 2 x 8 long LED modules
- 2 x 2 short LED “high balls” modules
- Fixing equipment
- 2 power supply boxes
- Installation guide



LIGHTING

- 250 lux - IRC > 70 - 135 lm/w
- Electrical power: 4500 W
- Uniformity coefficient $\geq 0,7$
- Color temperature: 5000 K
- Average light flux: 370 400 lm
- Proprietary optical technology

Patent FR 3071586 B1 Patent US 11,118744 B2

LED BARS

- Powder-coated aluminium profile with ultra-resistant and UV-resistant polycarbonate diffuser
- Long LED bars: 380 x 5,9 x 7,9 cm - 6,3 kg
- Short LED bars: 95 x 5,9 x 7,9 cm - 2 kg
- IP (protection): 65 - IK (impact resistance): 08
- Operating temperature: -30°C à +35°C

FIXING

- Lacquered stainless steel
- Designed for round, square, L or T posts
- Customized fixing system on non-standard posts - custom service

POWER SUPPLY

- 2 power supply boxes 2 x 1200 W (IP 67)
64 x 30 x 8,8 cm - 19 kg per box
- Power supply voltage: 180 - 528 V AC

COLORS

- Standard colors: Green & Black

RAL 6005

RAL 9005

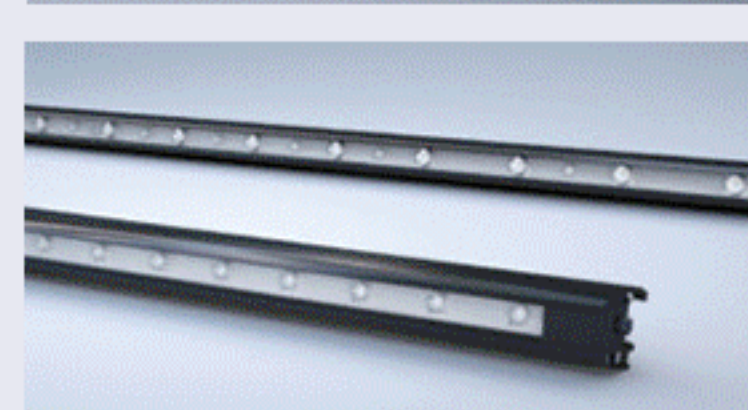
OPTIONS



**CUSTOM
COLOR**



**LIGHT
MANAGEMENT**



**LIGHTING
EXTENSION**



**WIRELESS
CONTROL**