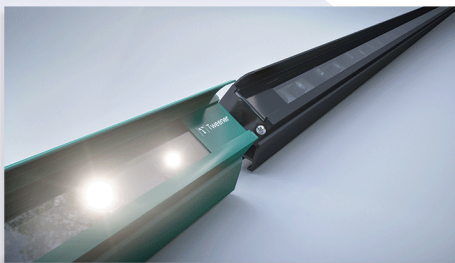




# SINGLE TWEENER

## Highlight your performance!

Tweener revolutionizes tennis court lighting thanks to its linear LED bar system, patented by NLX, that mounts directly onto the fence posts on each side of the court.



5-YEAR WARRANTY



MADE IN FRANCE



INSTALLED IN 1 DAY



LIFESPAN OF MORE THAN  
50.000 h



360° LIGHTING



UP TO  
60% SAVINGS

### ECONOMICAL & UNDERSTATED

**Attractive purchase price  
and easy installation**  
(no building permit, installed in 1 day)

**Low power consumption  
and carbon impact**  
(only 2200 W to light up a field)

### ATTRACTIVE

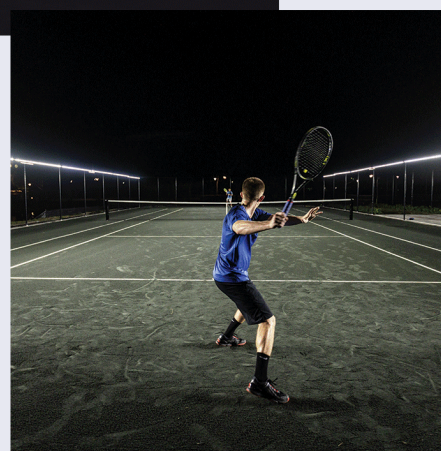
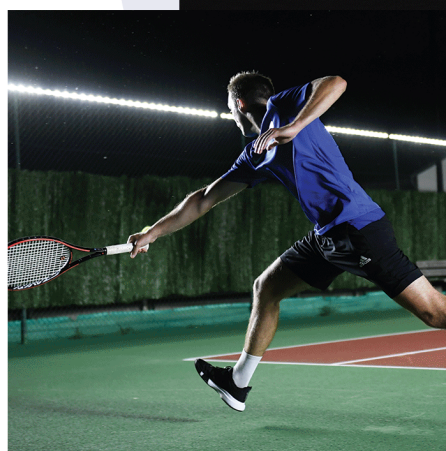
**Streamlined design that perfectly  
blends into the environment**  
(sleek lines, no visual nuisance)

**Optimized lighting quality**  
(proprietary optical technology)

### RELIABLE

**A double certified technology**  
(CE & UL norms compliant)

**Extended lifespan with  
minimum reliability of  
50.000 hours**  
(5-year warranty)





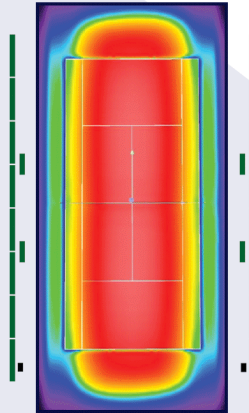
# SINGLE TWEENER

## APPLICATION

Single Tweener lights up **1 outdoor tennis court** for unequalled night-time playing comfort!

## COMPOSITION

- 2 x 8 long LED modules
- 2 x 2 short LED “high balls” modules
- Fixing equipment
- 2 power supply boxes
- Installation guide



## LIGHTING

- 300 lux - IRC > 70 - 130 lm/w
- Electrical power: 2200 W
- Uniformity coefficient  $\geq 0,7$
- Color temperature: 5000 K
- Average light flux: 185 200 lm
- Proprietary optical technology

*Patent FR 3071586 B1 Patent US 11,118744 B2*

## LED BARS

- Powder-coated aluminium profile with ultra-resistant and UV-resistant polycarbonate diffuser
- Long LED bars: 380 x 5,9 x 7,9 cm - 6,3 kg
- Short LED bars: 95 x 5,9 x 7,9 cm - 2 kg
- IP (protection): 65 - IK (impact resistance): 08
- Operating temperature: -30°C à +35°C

## FIXING

- Lacquered stainless steel
- Designed for round, square, L or T posts
- Customized fixing system on non-standard posts - custom service

## POWER SUPPLY

- 2 power supply boxes 2 x 1200 W (IP 67)  
64 x 30 x 8,8 cm - 10 kg per box
- Power supply voltage: 180 - 528 V AC

## COLORS

- Standard colors: Green & Black

**RAL 6005**

**RAL 9005**

## OPTIONS



**CUSTOM  
COLOR**



**LIGHT  
MANAGEMENT**



**LIGHTING  
EXTENSION**



**WIRELESS  
CONTROL**